

Date	Feb 13, 2023
------	--------------

SUBJECT: Wrecker Controls Installation
PURPOSE: Integrated Wrecker – Final Installation & Dressout

Installing Controls

Install the air cylinders to the appropriate handles using the supplied hardware.

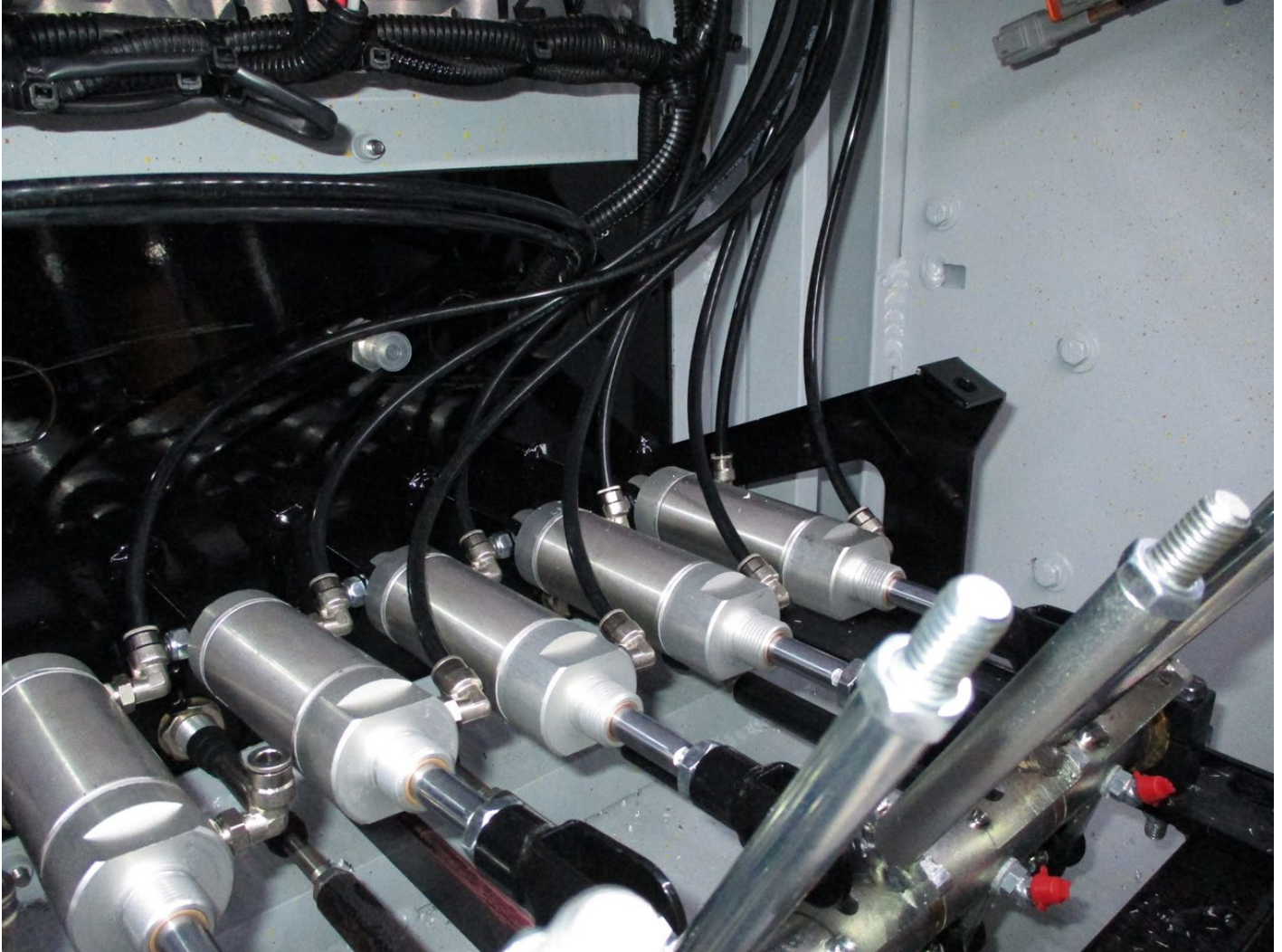


Installing Controls (cont'd)



Installing Controls (cont'd)

Connect air lines from the appropriate air valve to the air cylinders connected to the handles.



Installing Controls (cont'd)

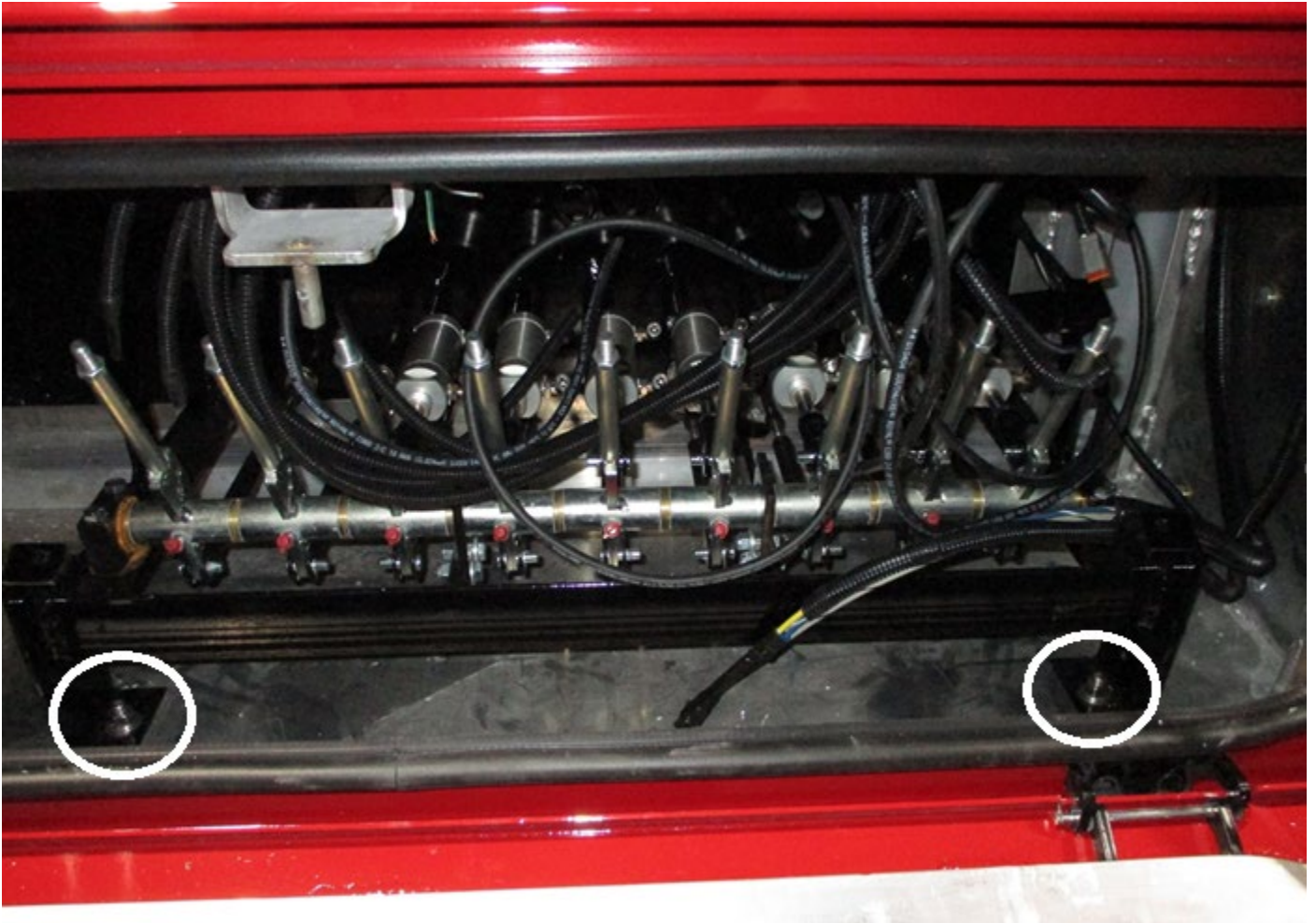


Installing Controls (cont'd)

Bolt down both sides of the control station frames on the driver and passenger side with the supplied hardware.

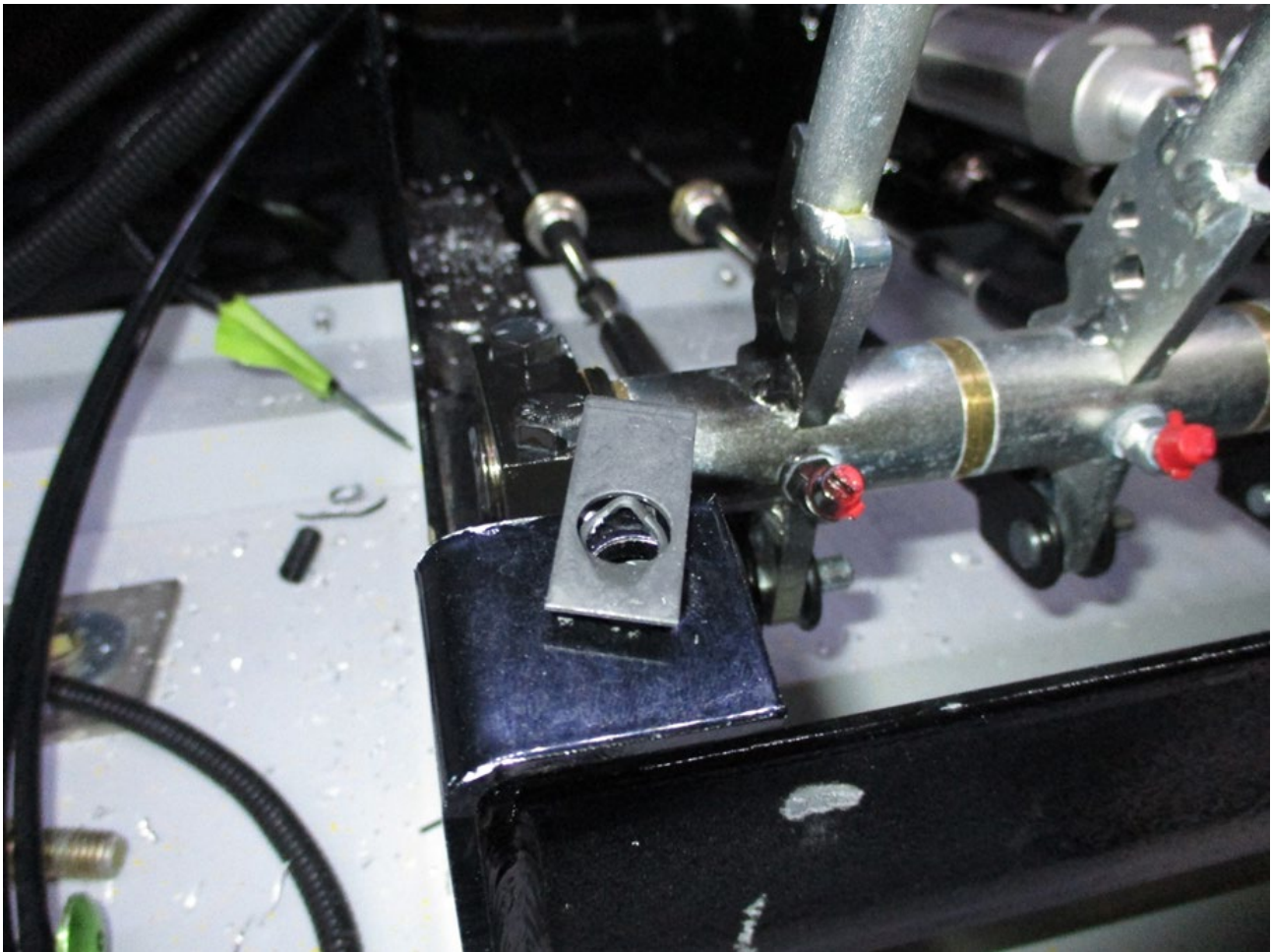


Installing Controls (cont'd)



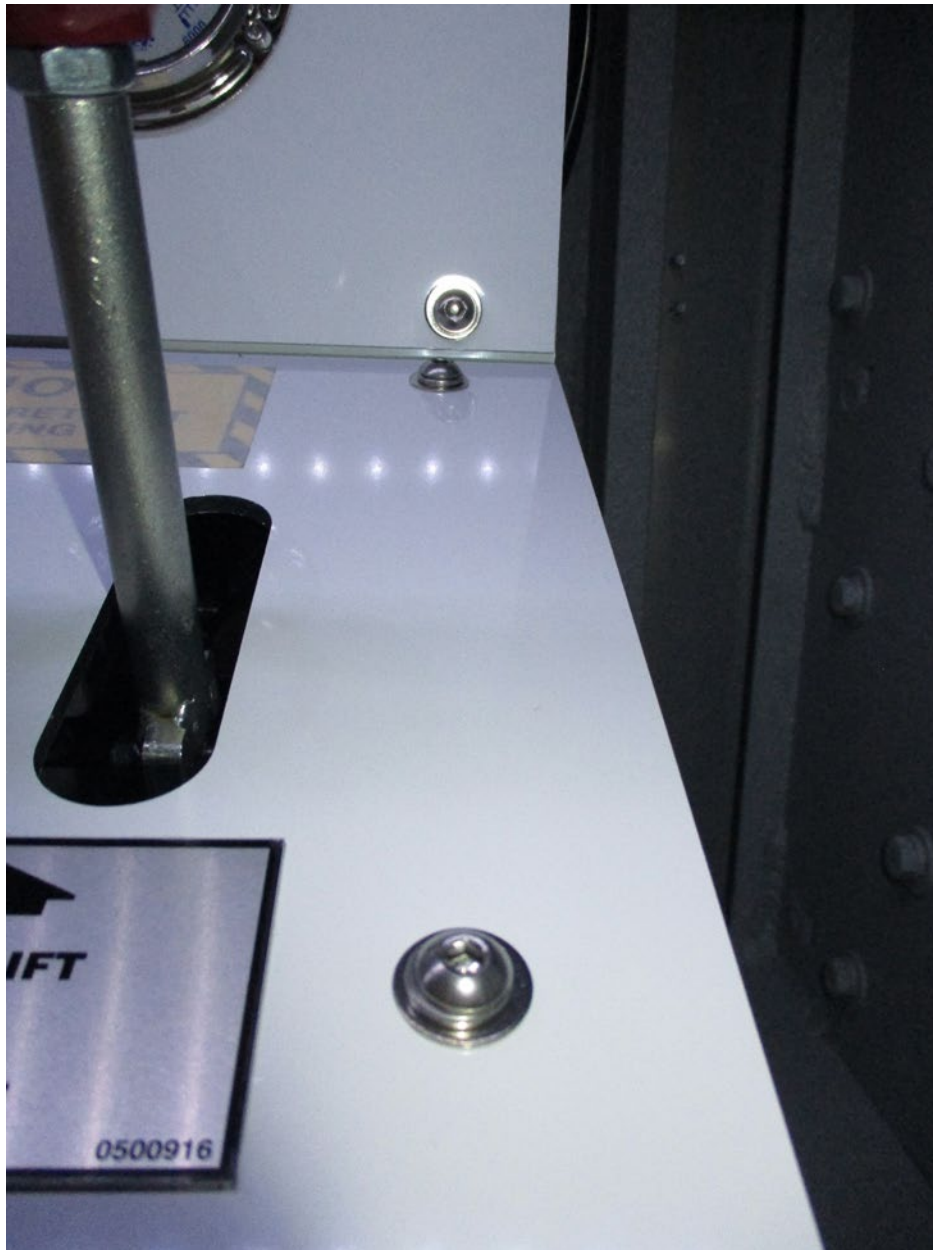
Installing Controls (cont'd)

Use supplied hardware to bolt the control panels in place on the control frames.



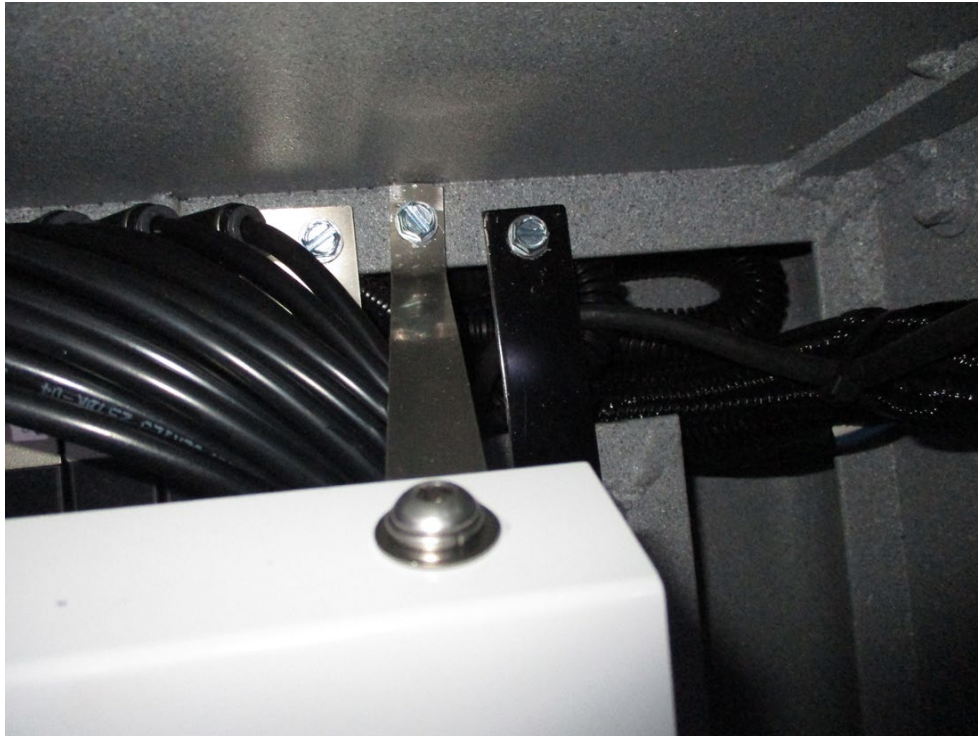
Installing Controls (cont'd)

Use supplied hardware to bolt the control panel to the control station.



Installing Controls (cont'd)

Use the supplied hardware and bracket to brace the left and right-side of the control panels in place. Do this on both the driver and passenger-side controls.



Installing Controls (cont'd)

Air Regulators

Mount the air regulators on the designated panel. This will vary depending on the unit.



- Run an airline from the OUT port of the right-hand regulator to the air bank. Install the Tee fitting on the IN port.
- Install live air from the chassis air tank on the IN port on the Tee fitting. Connect the other port on the Tee fitting to the left-hand air regulator for the winch rope tensioner on the IN port and install the winch air line for the rope tensioner to the OUT port.
- It is convenient to mount the Flex8 Remote Receiver to the panel between the air regulators as shown above.

Century - finished example

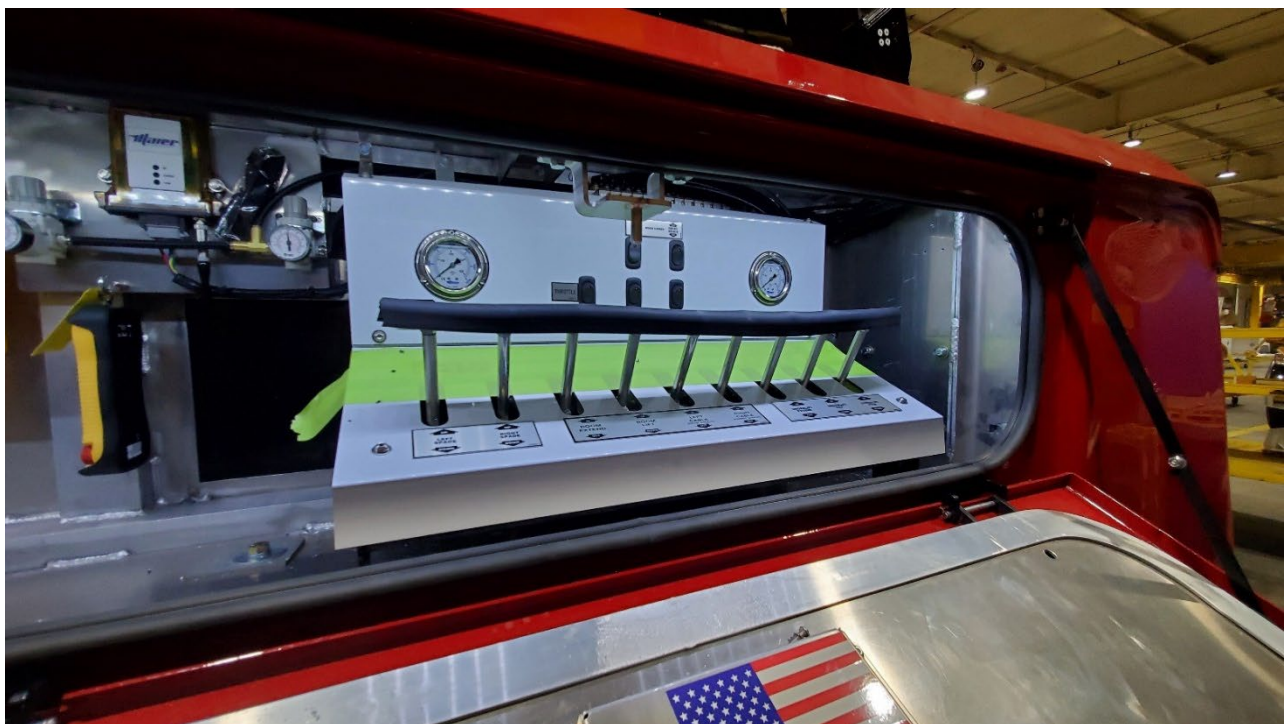
Left-hand controls



Note: the RAM mounted Whelen keypad and Flex8 remote location may vary.

Century (cont'd)

Mount the hydraulic gauges using 8x32 bolts and nuts supplied with the unit. Connect the hydraulic lines from the pass-through box hydraulic fittings on the back wall plate.



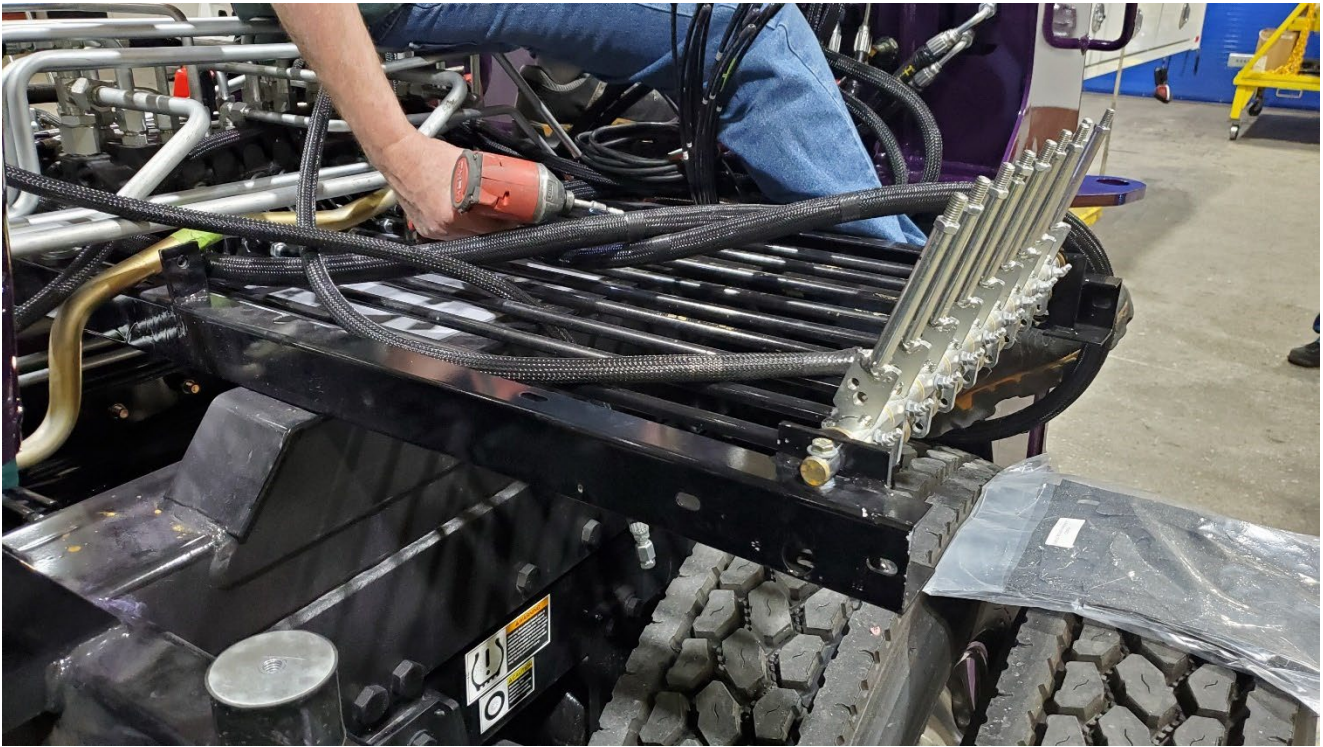
Century (cont'd)

Right-hand controls



Vulcan

Vulan controls are mounted to the frame and not the toolboxes:



Mount the control panel supports to the controls frame:



Vulcan – finished example

Typical Vulcan air regulator and Whelen keypad mounting location:



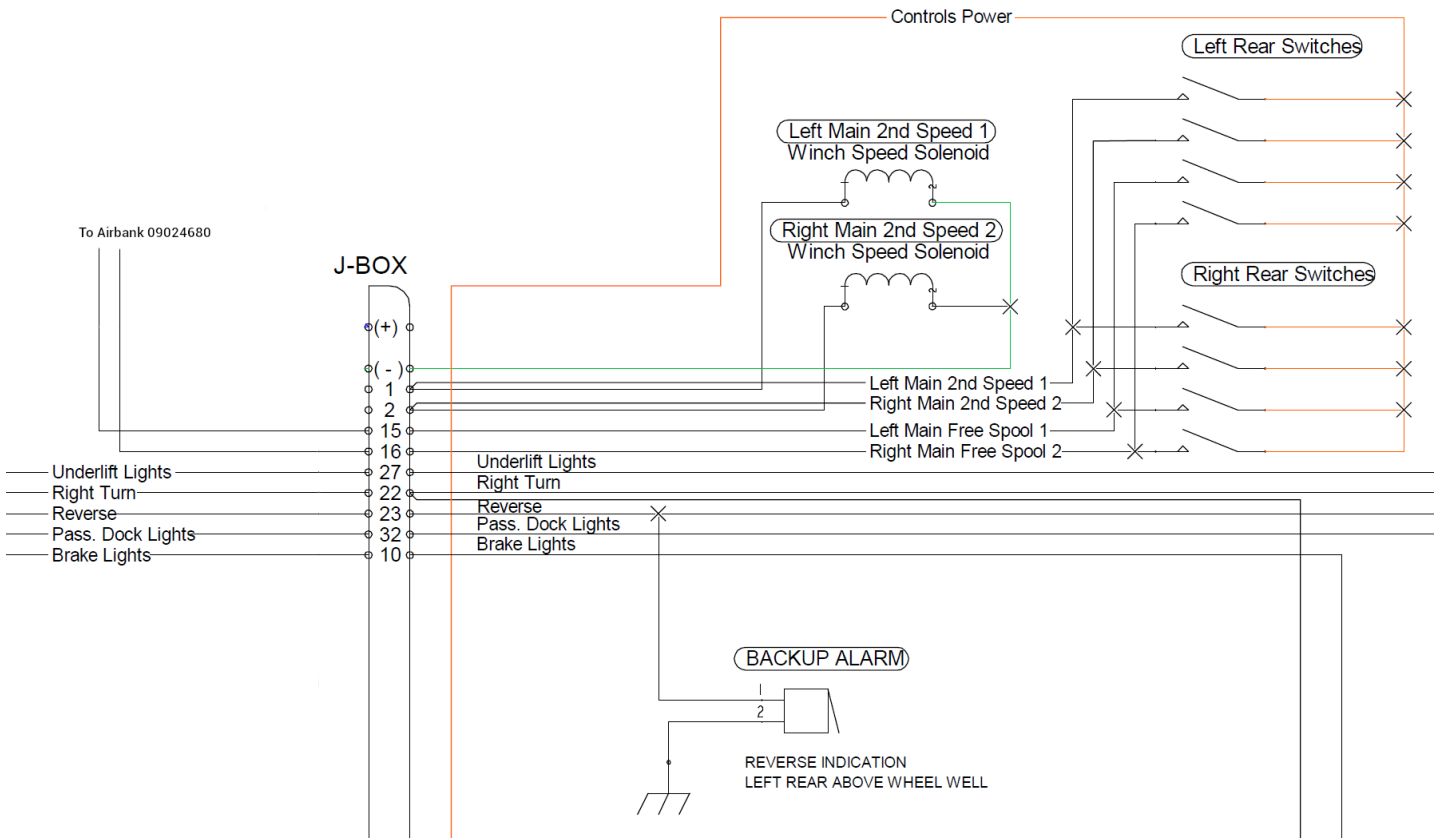
Completed Vulcan RH Control Station:



2-Speed & Freespool Switches

Harnesses installed in the toolbox for control station switches for both the left and right-hand sides:

- Part number **0312391 JMPR HARNESS, POWER AND GROUND (2 PCS)**
- Part number **0311809 INTEGRATED LH 2 SPEED / FREE**
- Part number **0311810 INTEGRATED RH 2 SPEED / FREE HARNESS**
- Use the jumper harnesses to supply Controls Power to the Switches
- Use the LH or RH 2-Speed & Freespool harness to connect the Normally Open terminal of the switch to the junction box.



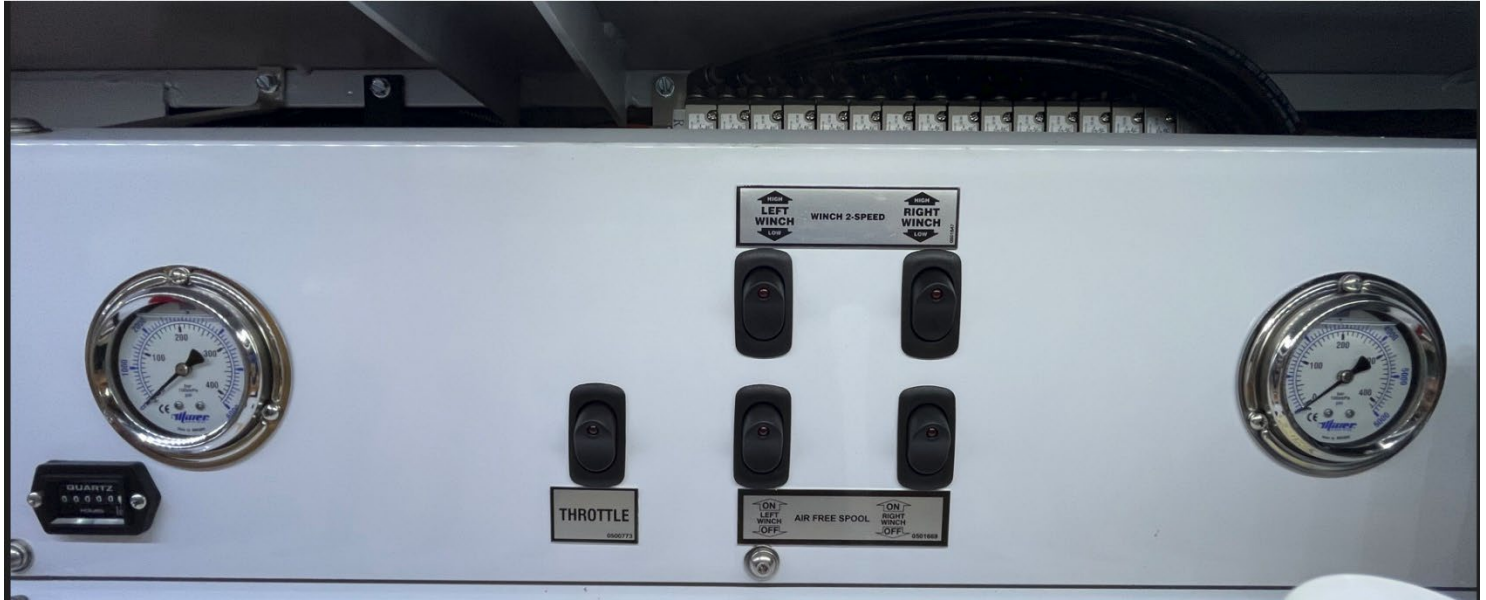
Throttle & Hour Meter

Throttle switch is typically connected to the ground and throttle up circuit wires from the chassis end of frame connector. Refer to the chassis body builder documents provided by the chassis manufacturer.

The hour meter is connected to Controls Power and Controls Ground.

2-Speed & Freespool Switches (cont'd)

Century LH Control Station / Upper Panel:



Century RH Control Station has winch switches only:



Note: labels should be installed after the assembly of the control station is complete.
Vulcan LH Control Station (with Third Winch Option shown)

2-Speed & Freespool Switches (cont'd)

Vulcan LH Upper Panel



Vulcan RH Upper Panel



Note: labels should be installed and pre-mask removed once installation is complete.